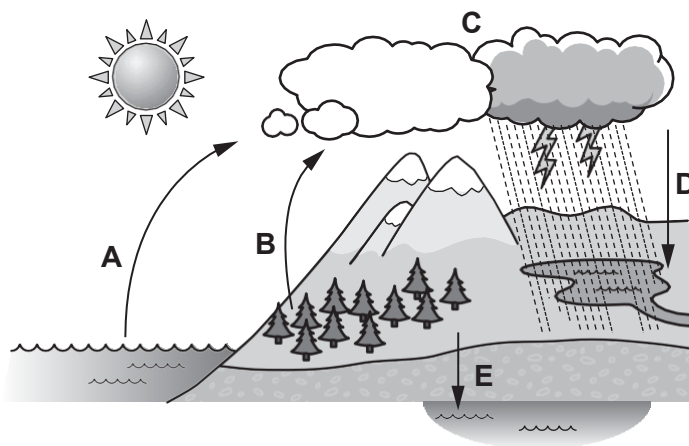


GCSE Biology B (Twenty First Century Science)
J257/01 Breadth in Biology (Foundation)

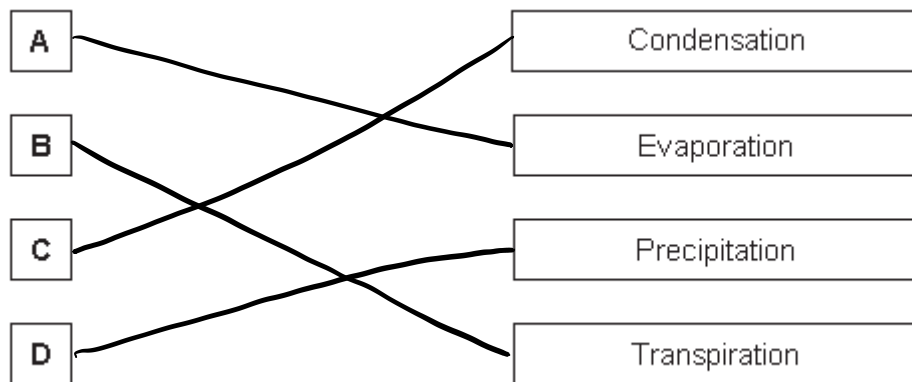
Question Set 17

Multiple Choice Questions

1. (a) The diagram below shows the water cycle.



Draw a line from **A**, **B**, **C** and **D** to the correct name for the process shown in the diagram.



[4]

(b) Deforestation is happening to rainforests in Malaysia and Indonesia.

Deforestation can affect the water cycle.

Put a ring around the word that completes the sentence describing the effect of deforestation on processes **B** and **E**.

Deforestation will decrease / increase / have no effect on process **B**.

Deforestation will decrease / increase / have no effect on process **E**.

[2]

- (c) (i) The rainforests in Malaysia and Indonesia are being replaced with palm oil trees.

This will have an effect on the biodiversity of the area.

Choose **one** word from the list to complete the sentence.

animals

microorganisms

organisms

plants

Biodiversity can be defined as the amount of living **organisms** in a particular area.

[1]

- (c) (ii) Biodiversity is important for economic, ethical and environmental reasons.

For each statement in the table, decide if it is an example of an economic, ethical or environmental reason.

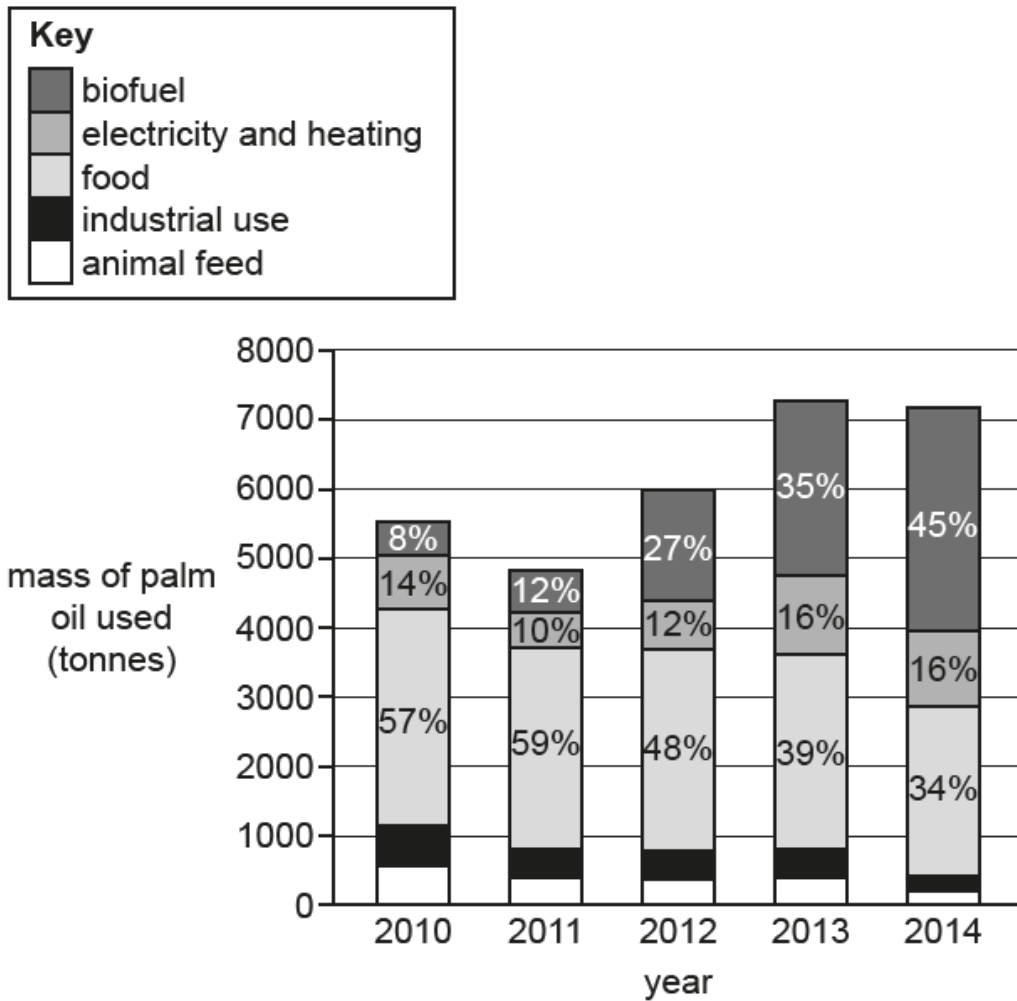
Tick (✓) **one** box for each statement.

Statement	Economic	Ethical	Environmental
All living things have a right to live.		✓	
Species provide us with useful products.	✓		
Removing one species can affect a whole ecosystem.			✓

[1]

(d) The palm oil taken from the trees is used in different ways.

The bar chart shows changes in the uses of palm oil between 2010 and 2014



Which use of palm oil increased the most from 2010 to 2014?

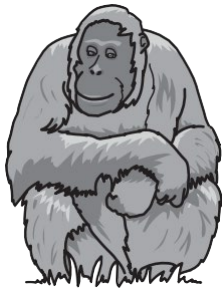
Use data from the graph to support your answer.

[2]

- biofuel

- greatest numerical increase : 37% (45% - 8%)

- (e) Orangutans live in the rainforests of Malaysia.



Orangutan

A century ago there were 230 000 orangutans.

The table shows the estimated number of three species of orangutans which remain today.

Species of orangutan	Number
Bornean	104 700
Sumatran	7500
Tapanuli	800

- (i) Calculate the percentage (%) of orangutans which remain today.

Give your answer to 2 significant figures.

$$\frac{104700 + 7500 + 800}{230000} \times 100 = 49\%$$

Percentage = 49 % [3]

- (ii) The number of orangutans living in the rainforests of Malaysia is only an estimate.

Explain why.

not all orangutans counted as some may live where unknown / hiding [1]

Total Marks for Question Set 17: 14

OCR

Oxford Cambridge and RSA

Copyright Information

OCR is committed to seeking permission to reproduce all third-party content that it uses in its assessment materials. OCR has attempted to identify and contact all copyright holders whose work is used in this paper. To avoid the issue of disclosure of answer-related information to candidates, all copyright acknowledgements are reproduced in the OCR Copyright Acknowledgements Booklet. This is produced for each series of examinations and is freely available to download from our public website (www.ocr.org.uk) after the live examination series.

If OCR has unwittingly failed to correctly acknowledge or clear any third-party content in this assessment material, OCR will be happy to correct its mistake at the earliest possible opportunity.

For queries or further information please contact The OCR Copyright Team, The Triangle Building, Shaftesbury Road, Cambridge CB2 8EA.

OCR is part of the Cambridge Assessment Group; Cambridge Assessment is the brand name of University of Cambridge Local Examinations Syndicate (UCLES), which is itself a department of the University of Cambridge